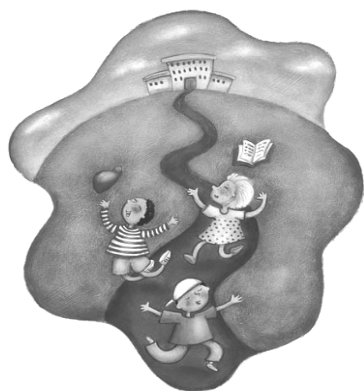


The Status of Maryland's Children



- Maryland has the 3rd highest median income (\$66,000) of families with children in the United States.
- Yet, 11% of Maryland's children (over 153,000) live in poverty.
- 28% of children live with parents who do not have full-time, year-round employment.
- 14% of children under six years of age live in poverty.
- The poverty level for a family of three is \$16,600.
- Children represent 26% of the homeless population served in shelter facilities. Outside Baltimore City, the proportion is 32%.

Children's Health and Safety:

- 80% of births in Maryland were to mothers receiving pre-natal care in the first trimester. Only 61% of Hispanic mothers and 73% of African-American mothers received prenatal care in the first trimester.
- More than 6,800 infants — or over 9% — were born with low birth weight (under 5.5 lbs). In Baltimore City, over 13% of all infants were born with low birth weight.
- 9% of children 17 and under do not have health insurance.
- Births to adolescents have been falling steadily over the last decade. In 2003 — 33 out of 1,000 births in Maryland were to females ages 15-19. This was down from 47 out of 1,000 in 1995 and 41 out of 1,000 in 2000.
- Similarly, the infant mortality rate in Maryland in 2005 was 7.3 per 1000 live births, the lowest rate in the past decade. The rate among African-American infants was more than 2½ times the rate for White or Hispanic infants.

Child Abuse and Neglect:

- In FY 2005 there were 31,501 investigations and 6,196 findings of child abuse and/or neglect.
- In FY 2003, over 3,400 children were removed from their home because of abuse and/or neglect.
- There are almost 10,000 children in out-of-home care (FY 2006); average length of stay is projected to be 31 months.
- The number of foster families declined by more than one-third over four years — from 4,648 in October 2001 to 3,041 in October 2005.

Child Care:

- In 2005, 75% of all children under age 12 had mothers in the work force.
- The average weekly cost of full-time child care in Maryland in 2005 was over \$144 for a child under two years of age in a family day care program and over \$203 for a child care center.
- Depending on the county in which they live, Maryland families spend between 16% and 21% of their income on child care. Baltimore City's average is over 33%. Recommended spending is no more than 10%.

Prepared by:

Catholic Charities, Social Concerns. November 2006



Sources:

MD Dpt. of Health and Mental Hygiene, "Working Together for a Healthier Maryland," 2003.
MD Kids Count Factbook, 2004 and Kids Count Data Book, 2005.
MD Child Care Resource Network: Child Care Demographics, 2005.
MD DHR Child Protective Services, Facts and Stats, 2005.